

TECHNOMECH ENGINEERS



Precision.
Quality.
Innovation.



ABOUT OUR COMPANY

Technomech Engineers is a leading manufacturer specializing in stamped automotive components with over 20 years of industry experience.

In the last few years, through rigorous quality control and root cause analysis of defects, we have generated a brand confidence of no shortage/no rejection in the minds of our customers.

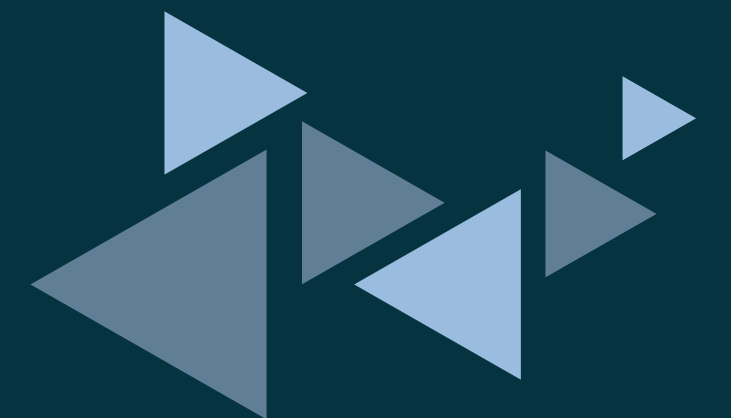
We have now adapted continuous improvement as our management philosophy and are committed to align with customer requirements.

Because of our proven deliverance in rapid development of complex stamped components, we have become the preferred supplier of many companies and appreciated for these abilities by our customers

With our enhanced capacity, we are seeking association with growing customers who are looking to build a sustainable quality focused relationship with their suppliers in a growingly competitive domestic and international market scenario.

KEY POINTS

- LOCATION: FARIDABAD, HARYANA, INDIA
- YEARS IN OPERATION: 20+
- FOCUS AREAS: QUALITY, INNOVATION, AND CUSTOMER SATISFACTION



VISION & MISSION



Vision

- ★ To be recognized as a global leader in the automotive manufacturing industry, known for our commitment to quality, environmental responsibility, and customer-centric approach.

Mission

- ★ To deliver superior automotive components through innovative manufacturing processes, ensuring excellence in quality, customer satisfaction, and sustainable practices.



CORE VALUES



Quality First

Commitment to maintaining the highest standards.



Customer Focus

Building long-term relationships with a deep understanding of client needs.



Integrity

Conducting business with honesty and transparency.



Innovation

Continuously improving processes and products.

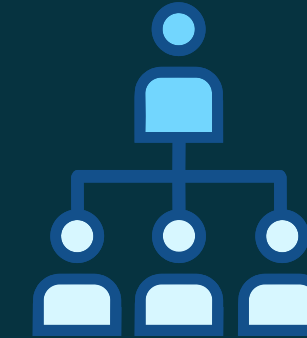


Sustainability

Prioritizing environmentally responsible practices.

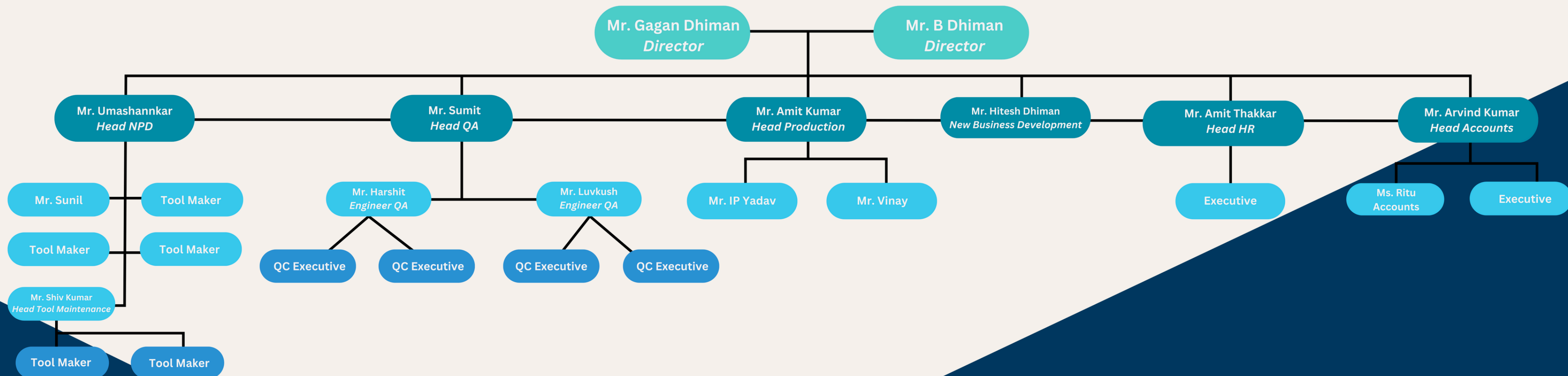


ORGANISATION CHART



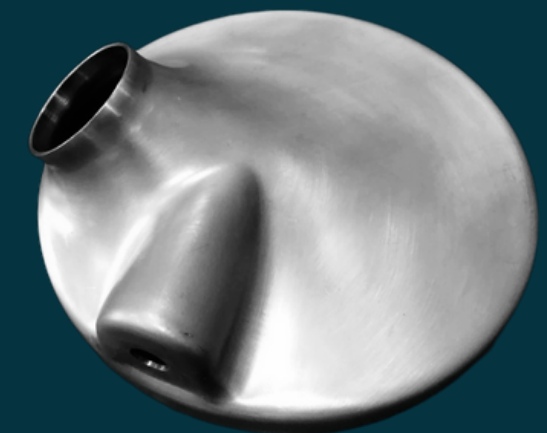
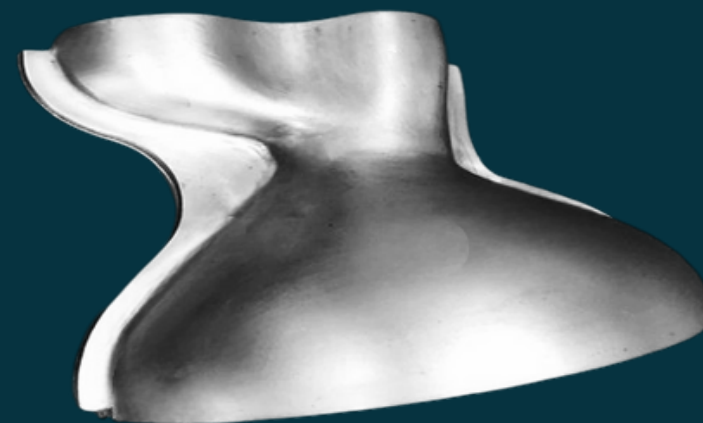
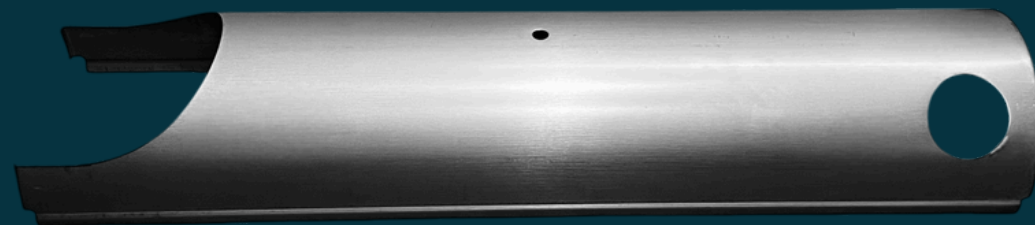
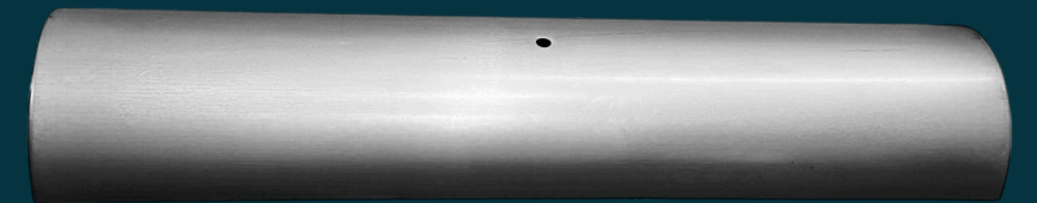
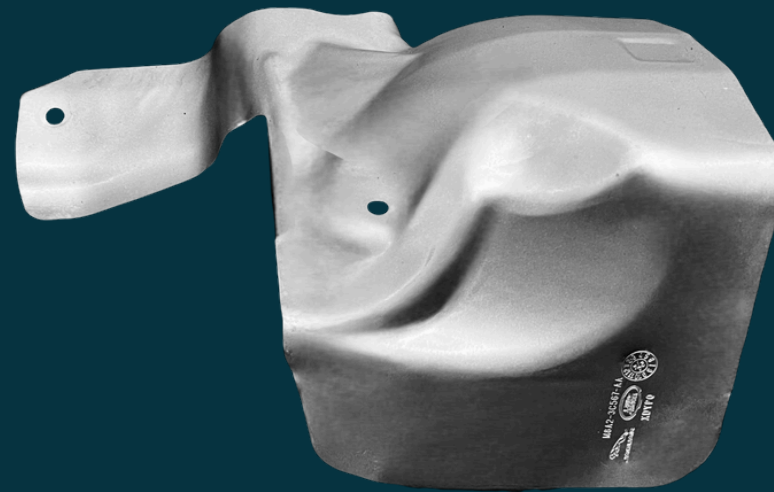
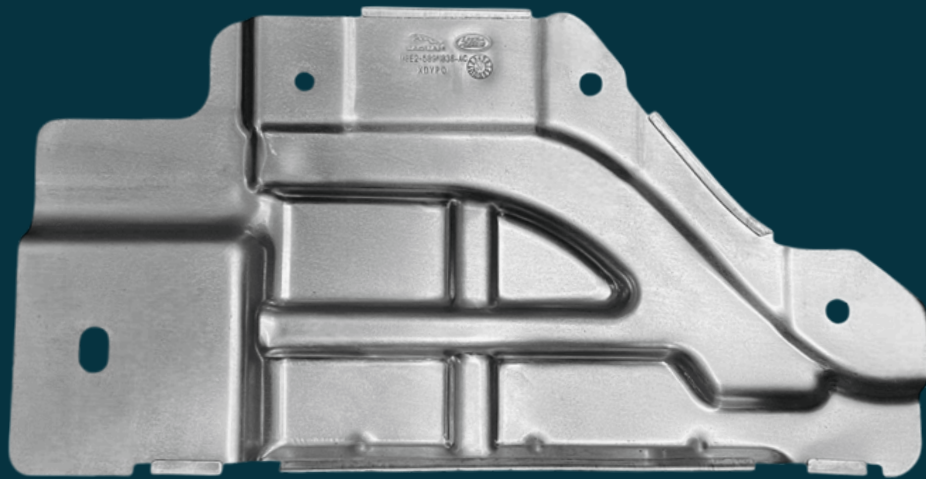
TECHNOMECH ENGINEERS

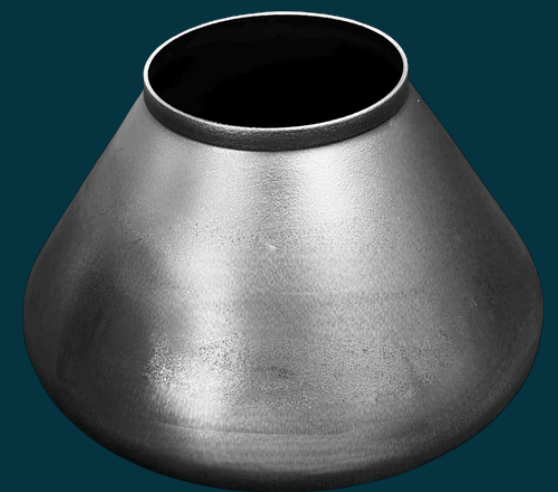
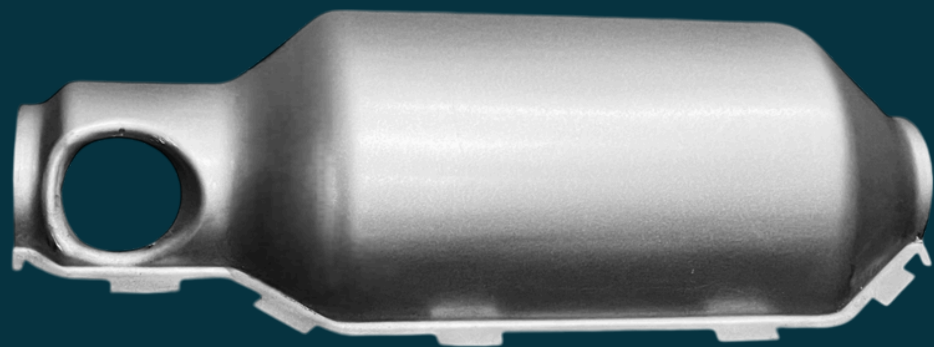
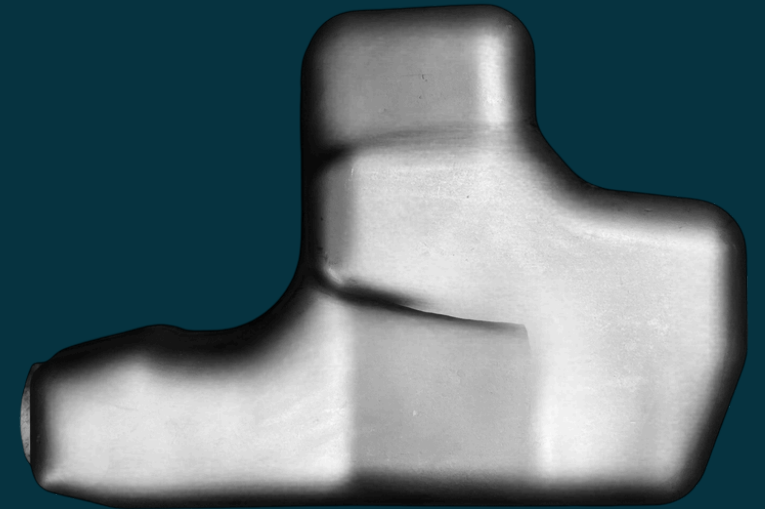
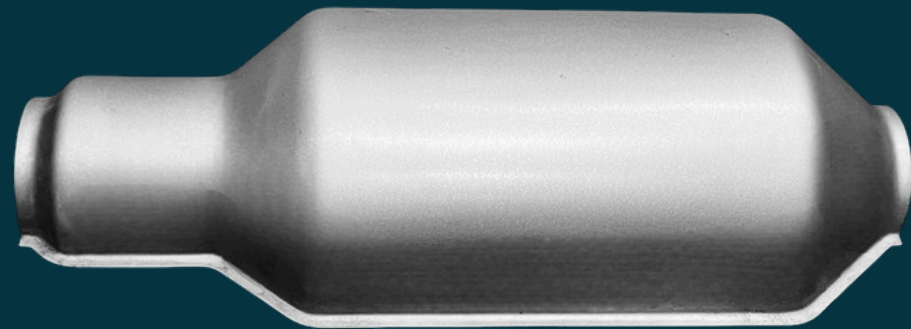
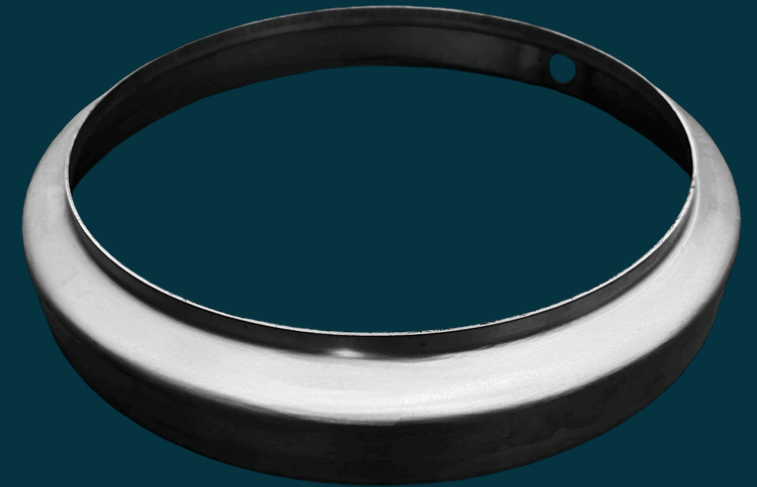
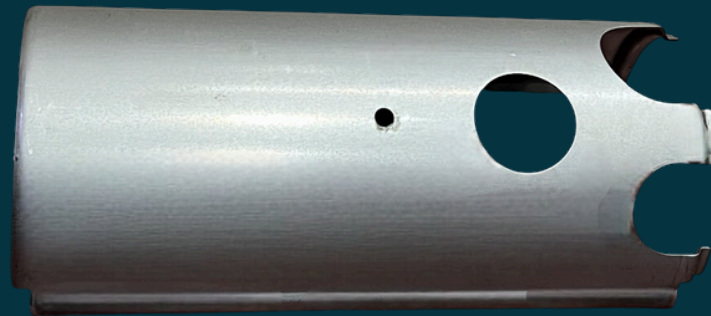
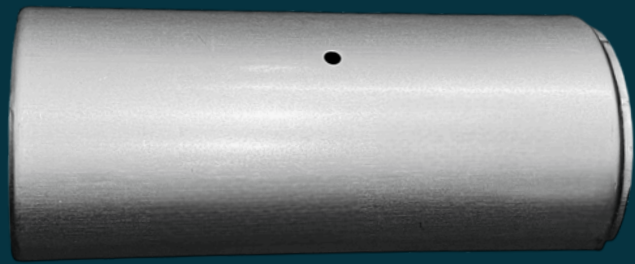
Organizational Chart

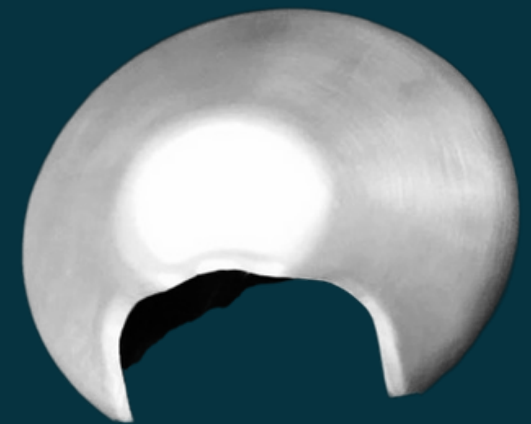
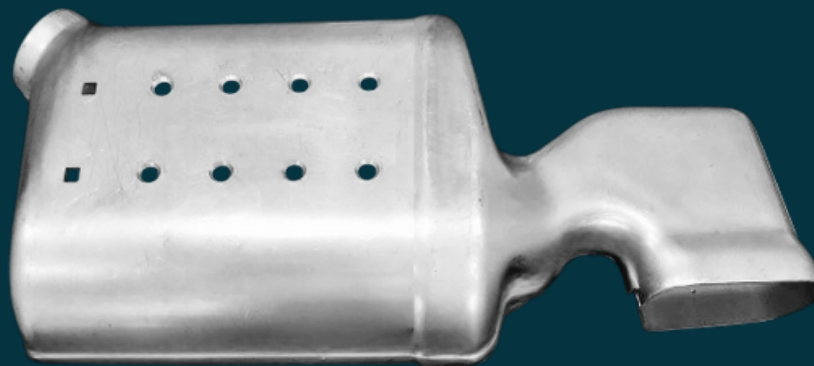
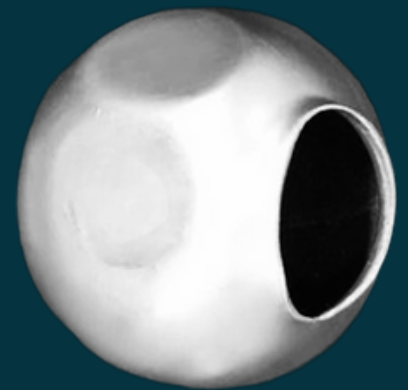
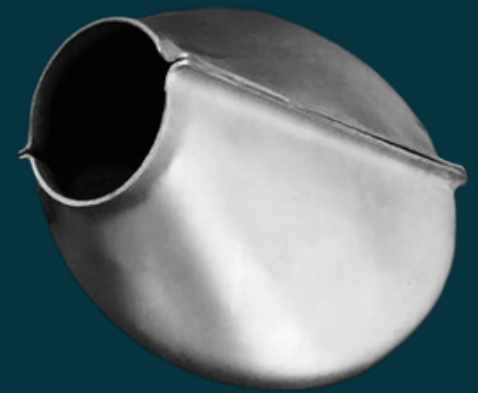
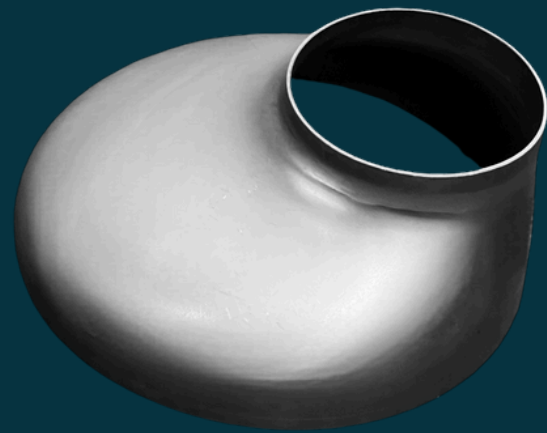
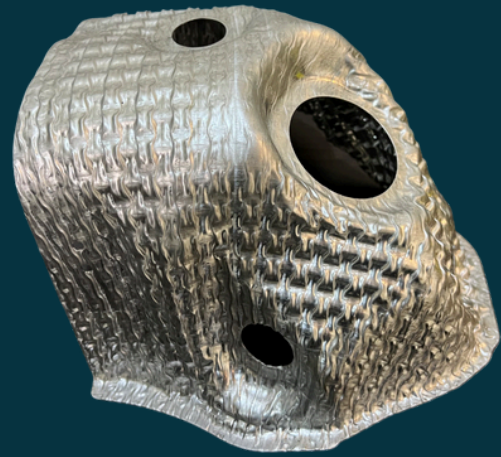


PRODUCTS

WE PRODUCE A WIDE RANGE OF PARTS BUT NOT LIMITED TO, **HEAT SHIELDS (SINGLE/DOUBLE/TRIPLE LAYERS IN SAID AND DIMPLED MATERIAL), END CONES, SHELLS, MOUNTING BRACKETS ETC. FOR EXHAUSTS AND ENGINES.**









MANUFACTURING CAPABILITIES

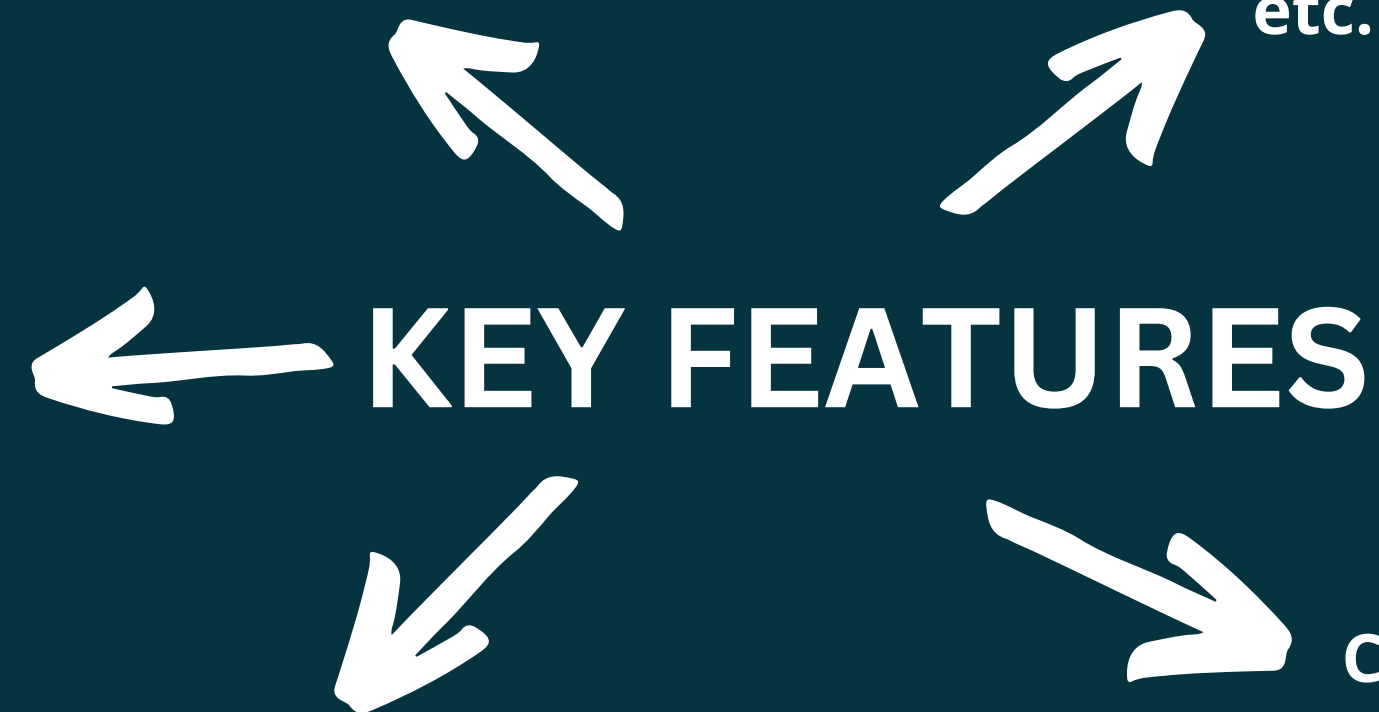
S.No	Machine	Make	Capacity	Qty	Bed Size mm	Shut Height mm	Stroke mm	Cushion Pressure	Cushion Stroke mm
1	Pneumatic Press	Seyi, Taiwan	110 T	1	1150x700	500	180		
2	Hydraulic Press	Kabeera Hydraulics, Fbd.	500 T	1	1400 X 1400	900	400	100 T	260
3	Hydraulic Press	Kabeera Hydraulics, Fbd.	300 T	1	1250 X 1250	850	400	80 T	260
4	Hydraulic Press	Kabeera Hydraulics, Fbd.	250 T	1	1250 X 1250	650	400	50 T	160
5	Hydraulic Press	Kabeera Hydraulics, Fbd.	200 T	1	1250 X 1000	600	350	40 T	160
6	Hydraulic Press	Kabeera Hydraulics, Fbd.	150 T	1	1000 X 1000	800	350	30 T	150
7	Mechanical Press	Excelsior	250 T	1	1050 X 850	500	150		
8	Mechanical Press	Excelsior	200 T	1	950 X 650	400	150		
9	Mechanical Press	Excelsior	150 T	1	850 X 550	325	150		
10	Mechanical Press	Excelsior	Up to 75 T	10	750 X 750	450	100		
11	VMC	Haas		1	800 X 550 X 550				
12	Radial Drill Machine	Gujarat	Up to 40 mm	2					
13	Lathe	Gujarat	Size - 6 Feet	2					
14	Vertical Milling Machine	Precicut, Taiwan	Bed Size - 1375 X 250 mm	2					
15	Surface Grinder	GAMT,FBD	450 x 300 mm	4					
16	DG Set	Cummins	125 kVA	1					
17	Hydraulic Lifters	LiftWell	3 Tonnes	3					





In-House Tooling and Design ensures quick turnaround for custom requirements and Proto Parts.

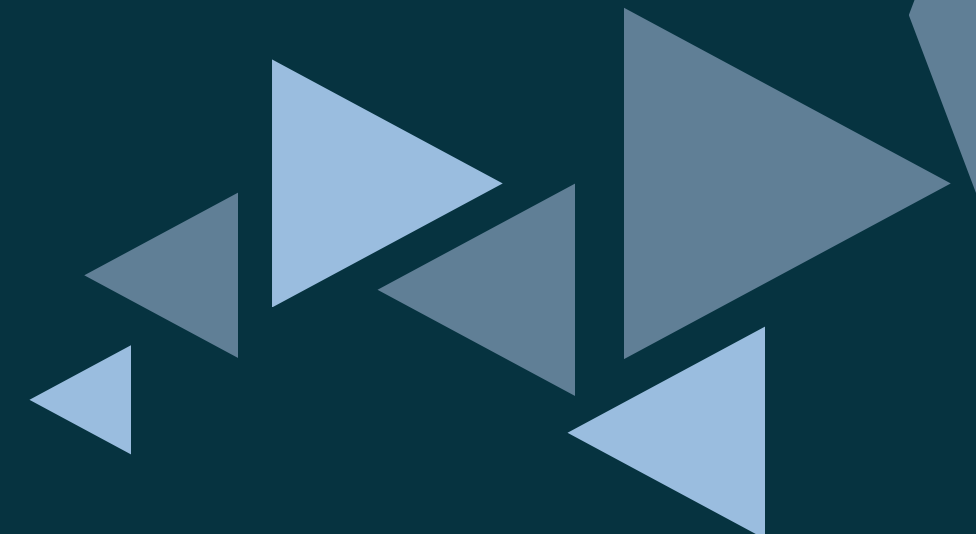
Specialization in Multi-Layered Heat Shields, Deep Drawn Parts etc.



In-House VMC for precision manufacturing of complex components.

Hydraulic and Mechanical Presses ranging from 50 to 500 tons, capable of handling various material grades.

Capability to handle sheet thickness from 0.15mm to 10mm

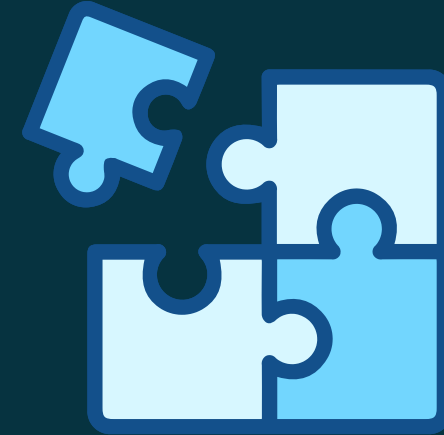


OUR PLANT





MEET OUR VALUABLE CUSTOMERS





Awards & Recognition



TECHNOMECH ENGINEERS

FACILITATING PRECISION-DRIVEN MANUFACTURING WITH UTMOST DUE-DILIGENCE

India's auto components sector is steadily shifting toward electrification, localization, and global sourcing, with suppliers evolving themselves as innovation partners. Government initiatives under MSMEs and "Atmanirbhar Bharat" have further supported localization and capacity building. Having said that, OEMs and Tier-I suppliers, today, face rising input costs, commodity price volatility, strict compliance (IATF, ISO, PPAP), and pressure for faster, cost-effective product development.

This is where Technomech Engineers come to the fore to tackle these aforementioned factors. The company ensures faster development by vertically integrating tooling and manufacturing with in-house design. It secures stable raw material partnerships, while implementing lean agile systems, and collaborating early on engineering for DFM and cost optimization, delivering precise, OEM-level solutions with Tier-II execution speed. "Every component we make carries with it a promise, i.e., performance, partnership, and purpose", states Gagan Dhiman & Bablu Dhiman, Directors, Technomech Engineers.

Due to its competency in the field, Technomech Engineers has become a leading and one of the most sought-after manufacturers, specializing in stamped automotive components with over 20 years of industry experience. In the last few years, it has generated a brand confidence of no shortage/no rejection in the minds of its clientele through rigorous quality control and root cause analysis to overcome pressing challenges in the automotive industry.

Fostering End-To-End Expertise

Technomech Engineers' core strength lies in its fully integrated, end-to-end manufacturing ecosystem, providing total control and accountability. Its in-house tool design utilizes 3D software to simulate material flow and predict defects, enabling precise progressive, compound, or draw tools. This speeds-up development and reduces cost efficiency. It also has a self-sufficient tool room which further accelerates iterations and secures IP ownership. The press shop, with hydraulic, mechanical, and pneumatic presses (50-500 tons), handles progressive, deep-draw, and tandem operations with efficient changeovers ranging from sheet thicknesses from 0.15mm to 10mm.

Furthermore, the company supports assembly and fabrication and enforces strict quality control through 100 percent visual checks, dimensional audits, SPC sampling, PPAP documentation, and traceability. This ensures dimensional accuracy, reduced lead times, and scalable, high-tolerance production.

Technomech Engineers' portfolio includes multi-layered heat shields, brackets, shells, and end cones, serving 3W, PV,



and CV automotive sectors. As a Tier-II supplier to OEMs like JLR, Volvo, Cummins, Tata, and Maruti Suzuki, it has developed more than 250 components, engineering each as a critical part of broader systems.

Additionally, the company provides end-to-end lifecycle solutions that mitigates risk, speed up delivery, and create long-term value. From prototyping, thorough pre-production planning to JIT-supported mass production with full traceability, it ensures precision at every stage. Post-delivery, it also offers ECR support, RCA, CAPA reporting, and joint quality audits.

Furthermore, the company focuses on long-term partnerships through proactive issue resolution, design-to-delivery ownership, shared KPIs, and transparent reporting. Its meticulous, client-focused approach has earned the company decade-long relationships built on trust, accountability, and continuous improvement.

Carving a Niche for Itself

Technomech Engineers stands out in today's competitive ecosystem through technical autonomy, IATF 16949-certified quality systems, and all-encompassing client collaboration on optimization. With lean and flexible capacity, it successfully manages pilot runs, changes, and scale-ups efficiently, blending big-company discipline with small-company agility.

Speaking on its promising journey, Technomech Engineers started (2000-2008) with a press shop, automotive components manufacturing, and ISO 9001 certification. During its expansion phase from 2009-2016, it added high-tonnage hydraulic presses. The transformation phase between 2017-2021, focused on high-quality tools. From 2022-2025, it gained IATF certification and opened a 25,000 sq.ft. plant in Sikri, Faridabad.

Future Roadmap

"Going forward, Technomech Engineers' future strategy would be focused upon EV component readiness, smart manufacturing systems. We aim to become a trusted, future-ready manufacturing partner within five years and plan to expand globally", concludes Bablu Dhiman and Gagan Dhiman.

Top 10 Automotive Component Manufacturers from Haryana – 2025

Awarded by Industry Outlook Magazine

We're proud to be recognized for our precision, engineering capabilities, and long-standing client trust. This milestone reflects over 20 years of dedication to quality, tooling excellence, and innovation in manufacturing.



"Every component we make carries with it a promise of performance, of partnership, and of purpose."

QUALITY ASSURANCE



CERTIFICATE

Quality Austria Central Asia awards this qualityaustriacentralasia certificate to the following organisation :

This qualityaustriacentralasia certificate confirms the application and further development of an effective

TECHNOMECH ENGINEERS

Quality Management System
complying with the guidelines of standard
ISO 9001: 2015

Plot No. 41F, NIT Industrial Area, Faridabad, Haryana – 121001, India

Manufacture of Sheet Metal Components

The validity of the qualityaustriacentralasia certificate will be maintained by surveillance audit every year

Registration No.: IND/QMS/2025/N/047

Date of initial issue: 22 February 2022

Date of Current Issue: 21 February 2025

Valid until: 20 February 2028

Issue No.: 02

Noida, 21 February 2025

Quality Austria Central Asia Private Limited - ATS Bouquet, Plot No. A2/2, Tower C, 201 Sector - 132, Noida, Uttar Pradesh - 201301

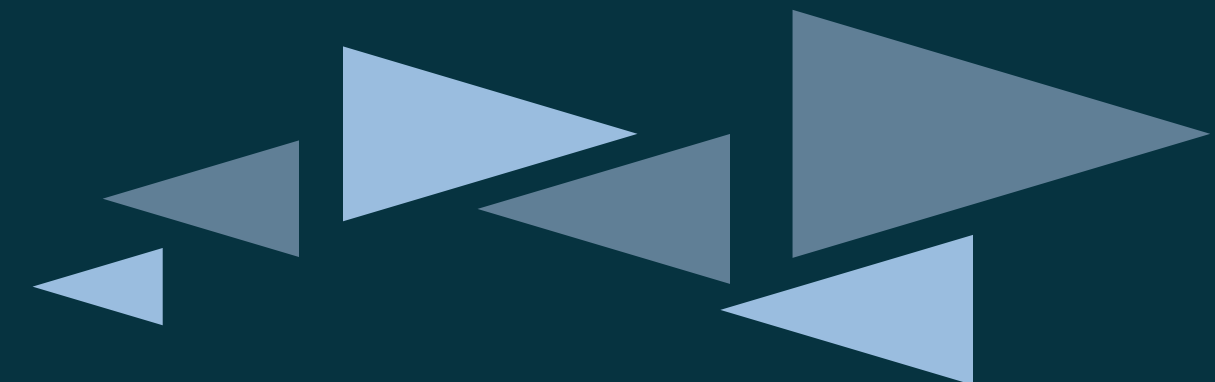

Anil Murjani
Executive Director



Quality Austria
Central Asia
Private Limited
is accredited by
National
Accreditation Board
for Certification
Bodies (A Member
of IAF MLA)
under the
Accreditation
Number QM 044
for Accreditation and
registration details
please refer to the
applicable
regulations and
guidelines published
on the website of
NABCB under
"http://nabcb.qci.org.in
/accreditation
/reg_bod_qms.php"
Doc No. QACA_Cert
_0624_002/IND, dated
14.06.2024

To check the current validity of the certificate please call at +91 120 5106100 or write an e-mail to marketing@qacamail.com
The current validity of the certificate can also be verified at our website www.qualityaustriacentralasia.com EAC: 17

- ISO CERTIFICATION: CERTIFIED BY QUALITY AUSTRIA.
- ADVANCED INSPECTION INSTRUMENTS: STATE-OF-THE-ART TESTING AND MEASUREMENT TOOLS.
- FOCUS ON PPM (PARTS PER MILLION): CONTINUOUS MONITORING AND IMPROVEMENT OF IN-HOUSE AND CUSTOMER-END PPM TO ENSURE SUPERIOR RELIABILITY.



THANK YOU

We look forward to working with you



Contact Us



Landline: +91 129 4026131
Mobile: +91 9871472999, +91 9818518131



info@technomechengineers.com



www.technomechengineers.com



41-F Industrial Area, NIT, Faridabad-121001, Haryana, India